

FOCAL Community Living Inc

Winter 2017

FOCAL MEMBERS NEWSLETTER



PUBLIC HOLIDAY SERVICE CONTINUATION

Following suggestions from families' carers and individuals, FOCAL has commenced an improvement process to ensure services are delivered when needed the most. This is inclusive of weekends and public holidays. FOCAL thrives on providing services that match your needs or those of your loved ones in a timely manner, at a place of your choosing and when you need it the most. To achieve this goal, you may have noticed that the organisation has been actively recruiting support staff to ensure the delivery of quality services.

Further to the majority of our clients' feedback and to simplify FOCAL processes, as of 2nd May 2017, FOCAL will be delivering individual services seamlessly over public holidays. Consequently, it is expected that clients will make any cancellations according to the FOCAL cancellation policy, prior to 3:00pm on the day before the service is due, if it is no longer required. This will enable staff to be redirected and will negate any unnecessary fees payable.

FOCAL is also looking at offering group services over public holidays. Individuals will be contacted in this case to ensure FOCAL has enough people to run the service.

Thank you all for your continuous support.

Michael Blanc

WHAT'S NEW?

LAUNCH OF NEW BRANDING & SERVICES

To celebrate the launch of our **new branding** and **new services**, Focal are holding a **free Community Barbeque** on Wednesday, June 7, 2017 from 4:00 - 6:00pm at 6 Canning Street, North Ipswich. Focal invites all of you to join in the celebrations. The event will provide an opportunity for the Ipswich community to come together and celebrate a **new Focal**. Along with our branding and services, we will also be launching our **new website**. For more information, please contact Sharon MacKinney, Operational Support Manager at Focal, on (07) 3812 2014. or via email at SharonM@focal.org.au



INSIDE THIS ISSUE

CEO Communication
Launch of New Services
FOCAL Aged Care Services
Board News
Meet the Team

SPECIAL POINTS OF INTEREST

- Pterodactyl Helicopters
- NDIS Ipswich Expo 2017
- Party in the Paddock
- Dates to Remember
- MyTime Men's Group Event

FOCAL IS LAUNCHING AGED CARE SERVICES!!

As you may be aware, FOCAL has been the provider of choice in the Ipswich area for disability services for almost 45 years.

Since May 2017, FOCAL has been providing quality aged care to Ipswich residents, utilising the 'empowerment' model to compliment these quality services.

The ongoing reform of Age care services means that if you and your loved ones are in reception of a level 1-4 Home Care package, since the 1 April, you have the choice to change provider if you are not satisfied with the services

If you would like further information, please contact Stratos on (07) 3812 2014 for a confidential conversation.

Stratos Efstratiou

Community & Business Development Manager



“Our Vision at Focal is to create endless possibilities for all...”

CHAIR OF THE BOARD

The retirement of Roy Henderson saw another Member being nominated as the new Chair of the Board.

Chris Hannah joined the FOCAL Board in 2016, after being introduced to the organisation whilst volunteering in Administration. Chris has a wealth of experience in Human Resources and governance and is currently employed with Queensland rail in a management position.

Please join us in welcoming Chris to this new position, he looks forward to getting to know the staff, volunteers and clients of FOCAL Community Living Inc.

RETIREMENT OF ROY HENDERSON

Sadly, the end of March saw former Chair of the Board, Roy Henderson, retire from this position and step down from the Board.

Words from Roy:

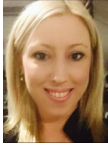
“It has been a privilege for me to serve on the FOCAL Board over the last ten years. To watch the organisation grow in so many ways, but especially in the services it offers, has been a delight. An image of the joy I have seen in our clients, their families and our staff through the programs we offer, such as Vacation and After School Care, events at Browns Park, Horizons and all the other activities, will remain with me forever.

There are many individuals I need to thank for their support over the decade I have been involved with FOCAL. But most of all I want to acknowledge the work done by the FOCAL team who have been the foundation of the organization. What FOCAL has achieved has only been possible through their dedication, care and willingness to serve some of the most disadvantaged people in our community.

I have many friends in the Focal community and I would hope that they can hear of my resignation directly from me. Consequently, I will send the Board another letter of resignation that I would like to have distributed to the FOCAL Members and also to have an article placed in FOCAL's next Newsletter.

Thank you, Debra, Janine, Chris and Russell for serving with me on the FOCAL Board. Your contributions positively affect many lives. My strongest desire is that FOCAL will grow from strength to strength.





SERVICE DELIVERY TEAM

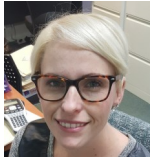
For those of you who haven't met the new –look service delivery team, we would like to introduce you.



Service Manager Heidi Crittenden is supported by Support Officer Sonya Mataia, and Service Manager Rachel Farr is supported by Support Officer Kristy Mellow.



These two teams are responsible for managing the support of our adult clients and services, and are operating from 7 Canning Street.



David Parry is heavily involved in the support of complex behaviour and works within the community when not in the office.



Operating within differing legislation is Service Manager Kerri Siebenhausen, who is responsible for services for children, being After School Care and Vacation Care. Kerri works with Team Leaders Elise Campbell and Janelle Lind to ensure the very best service is available to attending children and their families.

In the role of Community Centre Facilitator, Hannah Imhoff is based at 6 Canning Street four days per week. In this role, Hannah ensures the daily running of the centre, and creates and promotes outings and events for our clients.



Please note that FOCAL ADMINISTRATION has relocated to 6 Canning Street

All invoices are now to be paid at 6 Canning St with receipts given from this location

OPERATIONAL SUPPORT TEAM

There have been some big changes in the FOCAL Operational Support Team.

Practice Leader Gillian Hails commenced with the organisation a few weeks ago, and is assessing the practices and legislative requirements of the organisation.



Finance Manager Deborah Pozingis has been busy on the implementation of a new financial system, Attaché. Supporting her in this are the two Finance Officers, Jennifer Williams and Patty Hitchenor.



Stratos Efstratiou is leading the Community & Business Development Team in conjunction with new Project Officer Glenda Chaille and Ben Harrison.



Operational Support Manager Sharon MacKinney is supported by Shannon Jacobsen on reception and Russell Swinton who volunteers for two days per week. Volunteer Kim also attends each Friday morning to assist with administrative work.



Marketing & Communications Support Officer Greg Salmon continues to work in conjunction with the CEO and the Operational Support Manager to facilitate a new website and new marketing strategy for the organisation.



Rosters Officer Karyn Stieler and Dee Scheltinga continue to work within the Operational Support and the Service Delivery teams to ensure accurate rosters are distributed.



OUT OF SCHOOL HOURS CARE

AFTER SCHOOL CARE IN APRIL



The children and staff at 'After School Hours Care' have been having some great fun lately. The children asked if they could go to Queens Park for an excursion. Third time lucky, on the 26th April, they finally made it (the first two attempts were rained out!!!). They all enjoyed looking at all the different animals and learning about them. After the children had visited all of the animals, they ventured to the playground. There were lots of smiles and laughter there as you can

imagine, and now the children are asking each week, when and where is the next excursion?!!!



VACATION CARE SERVICES—JUNE / JULY

The next Vacation Care services will be: 26th June to 30th June (Seniors and Juniors); 3rd July to 7th July (Seniors only).

The June / July Vacation Care Service is going to go off with some rumbling of motorcycles and the *whooshing* of Helicopter blades.

Due to popular demand we have asked the 'Ulysses Motorcycle' group to revisit and give the children rides around the oval.

Mike from Pterodactyl Helicopters is coming for a visit to talk to the children about his Chopper, the children will have an opportunity to ask him questions and get up really close to the helicopter for a good look and a photograph if they wish.

We are also having the local Fire Brigade visiting in a big red Fire Engine, to talk to us about fire safety. The smiles will go for miles when the children get to hold that powerful Fire Hose!

These are just a few of the wonderful things to look forward to, in our upcoming Vacation Care Service...



For any queries relating to these services, contact Kerri Siebenhausen (Service Manager) on (07) 38122014 or via email at childcare@focal.org.au



Donated items from The Dark Magician Pop Culture Super Store, Bell Street IPSWICH

THE DARK MAGICIAN SUPER STORE

On behalf of FOCAL and the children attending the After School Care service, we would like to thank The Dark Magician Pop Culture Super Store, located in Bell Street, Ipswich.

This store has amazing game zones set up permanently to allow people to access the goods prior to purchase. They also teach and demonstrate games and advanced strategies, so the longer you stay the more you learn. Coffee and snacks are available for convenience.



PTERODACTYL HELICOPTERS

Pterodactyl Helicopters (Mike Jarvis) can do a 5 minute flights for Clients and Support Staff for \$60 each, from their Hanger at 479 Lake Manchester Rd, Brisbane QLD 4306, Australia.

Mike is also happy for you to just visit (Arrangements/Bookings are necessary) and see the Helicopter at its hanger.

Mike has experience taking

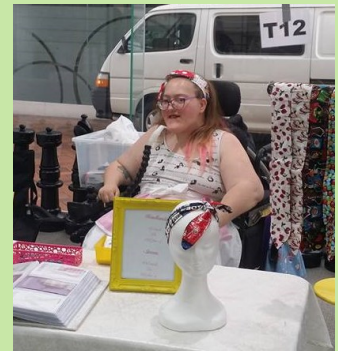
people with disabilities up for flights.

Groups would need to book ahead of time. To do so you could either call them (number is on their website), or message them through their website.

Pterodactyl Helicopter website - <http://pterodactylhelicopters.com.au/>

IPSWICH TWILIGHT MARKETS

Focal, in partnership with Knight Frank facilitated the Ipswich Twilight Markets in the Ipswich all throughout early 2017.



Although these markets have now come to an end, a big congratulations and thank you to the many people who made these weekly events possible.



Dee in Rosters for coordinating the event, Alan and John for assisting with the music equipment, the many support staff for attending and promoted the event, and particularly the Focal clients who attended and showed their support.



dates to Remember

Thursday 18th May	Brisbane Fresh Futures Market RNA Showgrounds, Brisbane
Friday 19th May	Ipswich Show Holiday
Tuesday 30th May	NDIS Ipswich Expo 2017 (Day 1) North Ipswich Reserve
Wednesday 31st May	NDIS Ipswich Expo 2017 (Day 2) North Ipswich Reserve
Wednesday 7th June	FOCAL New Services Launch FOCAL—6 Canning St, North Ipswich
Wednesday 14th June	Parent & Carer Workshop Claremont School
Sunday 18th June	Party in the Paddock Moggill Road, Pinjarra Hills
Monday 26th June	Vacation Care Week (Seniors & Juniors) Ipswich Special School
Monday 3rd July	Vacation Care Week (Seniors only) Ipswich Special School
Monday 3rd July	NAIDOC Week
Wednesday 6th Sept	Ipswich Fresh Futures Market Ipswich Showgrounds
Wednesday 25th Oct	Parent & Carer Workshop Goodna Special School

Focal Social Event



"Launch of a New Focal"

*Free Community Barbeque
Wednesday, 7 June, 2017*

Celebrate with Focal as we launch our **new branding** and **new services!** We will also be unveiling our new website, LifeTec Support Hub, Aged Care Services, and much, much more!

Where: 6 Canning St, North Ipswich

When: 4:00pm - 6:00pm

Cost: Free!

What to bring: If you wish to purchase drinks, please bring money on the night.



Please RSVP to Sharon at Focal by **Monday 22 May 2017**
on 3812 2014 or SharonM@focal.org.au

Also notify us of any dietary requirements you have.

NOTE: This is a supported event. Please ensure that you have organised necessary support with the Rosters Team if necessary.



Aged Care – Focal Community Services

Focal Community Services (Focal) are proud to launch their Aged Care Services in May 2017. Focal's Aged Care Services operate under a brokerage agreement with Auspire Care, who are an Approved Service Provider. These services cater for people who have received approval from the Aged Care Assessment Team, for the provision of Low and High Care Home Care Packages.

Focal has provided flexible, individualised services to the community for over 40 years. We want you to remain happy and independent in your latter years, through our in-home, independent living and community access services. You get to choose the supports you require, as well as your Support Worker. All our support workers are highly-qualified and experienced, and treat each individual with dignity and respect.

Focal will respond to your enquiry within **24 hours**; and present your care plan within the next **3 working days**.

Focal's Aged Care Services include assistance with:



Personal care

- **Daily living:** showering and toileting, continence management, skin integrity (for bandages and dressings) and attending hair and nail appointments. We also provide support for cognitive impairment, including individual therapy, activities and access to specific services. Alternatively, we can refer you to LifeTec for the provision of Assistive Technology.
- **Meal preparation:** preparing meals (and the sourcing of any necessary equipment), plus creating individual dietary plans. Our culturally-aware and multilingual staff can attend to your individual cultural or religious needs.
- **Mobility:** referral to LifeTec for the provision of Assistive Technology to enhance mobility (walkers) and lifting through mechanical devices (hoists). We can also provide assistance with these aids. LifeTec are the leaders of Assistive Technology in Queensland.

In-home services

- **Household management:** cleaning, vacuuming, gardening, errands and personal laundry. Personal laundry includes the laundering of clothing and bedding that can be machine-washed, plus ironing. We can arrange dry cleaning for any items that cannot be machine-washed.
- **Medication management:** medication prompts and assistance from our qualified staff members.
- **Home maintenance:** reasonably required maintenance to ensure your home and garden is in a condition of functional safety and security. We assist you on areas in your home posing safety risks, and provide technical advice on home modifications (using an occupational therapist). Examples of home modifications include easy access taps, bath rails and a shower hose.
- **Additional support:** 24-hour on-call access to emergency assistance, which includes an emergency call system. We also provide transport and assistance to attend health and shopping appointments, social activities and cultural community events. Respite care is also available for your carer.

Clinical care

- **Nursing, allied health & therapy services:** including speech therapy, podiatry, occupational or physiotherapy services
- **Other clinical services:** including hearing and vision services.
- **Referral to other medical & related services:** including health practitioners or other providers.

To register your Focal Aged Care package, please contact Mr. Stratos Efstratiou on (07) 3812 2014.



NDIS IPSWICH EXPO 2017

North Ipswich Reserve, The Terrace, North Ipswich

Tuesday 30th May, 9.00am – 4.00pm

Wednesday 31st May, 9.30am – 4.30pm

The National Disability Insurance Scheme (NDIS) is the new way of providing support for people with disability, their families and carers. The NDIS will become available in Ipswich, Lockyer Valley, Scenic Rim and Somerset local government areas from 1 July 2017.

This event is for participants, service providers and community members to:

- understand how the NDIS works
- learn how to get ready for the NDIS; and
- get up-to-date accurate information about the NDIS

Morning tea, lunch and afternoon tea will be provided at this free event. Children under adult supervision are welcome.

Free parking is available. Places are limited.

The venue is closest to Ipswich, Bell Street Train Station.

To register for day one click [Day One](#)

To register for day two click [Day Two](#)

Alternatively email qld.south.engagement@ndis.gov.au or call Paul on 0459 889 877.

Please let us know of any accessibility requirements.

#ndisready



My Time Ipswich Men's Group

You are invited to join the
My Time Ipswich Men's Group
for

Dinner at Indian Mehfil

This evening is an opportunity for men who are Dads, Granddads, Uncles, Male Adult Siblings or Male friends of a young person with a disability to meet up.

The group meets regularly during school terms and gives men a chance to chat, go on outings, go to dinner and have information sessions about topics of interest.



We hope you will be able to join us at this event or another in the future as new members are always welcome.

The event is just for carers. To assist you to join the group we are able to provide a qualified worker on the night to support member's sons or daughters. If this would be helpful please let us know when you RSVP.

Date: Thursday 25th May
Time: 6.30pm
Venue: Indian Mehfil Restaurant
116 Brisbane Street
Ipswich

Time: 6.30pm to 9.30pm

Cost: Free

To RSVP for all events contact:

Ben Harrison 0414 470 278

or email benh@focal.org.au

FUTURE EVENTS:

Monday 19th June 6.30pm

Ipswich Jets Trivia

Lowry Street

North Ipswich

Thursday 20th July 6.30pm

Viva Italia

231 Brisbane Street Ipswich

*Proudly presented by
FOCAL Community Living Inc.*



*With funding through My Time and
support from CPL*

Proudly sponsored by



McINTYRE
CENTRE
Riding for Disabled



Dedicated to a better Brisbane

Party In the Paddock!

FREE
ENTRY!

SUNDAY 18TH JUNE 2017
11am - 4pm

2963 MOGGILL RD, PINJARRA HILLS

PONY
RIDES

MARKET
STALLS

KIDS
RIDES

FOOD
STALLS

www.mcintyrecentre.org.au

