



# FOCAL Community Living Inc

## Members Issue:

### Special Edition NDIS



## Lets Talk FOCAL...

I would like to reflect and acknowledge all FOCAL employees and volunteers for their strength and willingness to achieve great things already this year. I can vouch for the effort FOCAL's employees and volunteers have deployed to ensure the organisation is ready for the NDIS and that high quality service standards are being met, while catering to our customer's individual needs.

FOCAL is delighted to announce that we have finalised our registration with the National Disability Insurance Scheme (NDIS). In addition to services the organisation currently provides, FOCAL is ready and registered to provide support with Plan Management, Accommodation Support and Care Coordination. FOCAL can empower you through:

- Assist Access / Maintain Employment (*assistance to access and maintain employment or higher education*)
- Development – Life Skills (*development of daily living and life skills*)
- Assist with Self Care Activities
- Daily Tasks / Shared Living (*assistance with daily life tasks in a group or shared living arrangement*)
- Assistance to Access City, Social and Recreational Activities (*participation in community, social and civic activities*)
- Group Based Community Social and Recreational Activities (*assisting participants to participate in group based activities, social and recreational activities*)
- Supported Independent Living
- Specialised Disability Accommodation
- Plan Management (*management of funding for supports*)
- Assist-Life Stage, transition (*assistance in coordinating or managing life stages, transitions & supports*)
- Support Coordination (*provision of support coordination within specialist framework*)
- Accommodation/Tenancy (*transition supports*)
- Assist-Travel/Transport
- Household Tasks (*household tasks enabling the participant to maintain their home environment*)
- Community Participation (*involvement in social, capital and/or community projects*)
- Behaviour Support
- Early Childhood Supports

It is imperative for your future or for your loved ones that you are ready and feel prepared, to ensure you get maximum support from the scheme.

This special edition of our newsletter will focus on preparing for the NDIS.

With these exciting developments in FOCAL, 2017 is shaping up to be an exciting year already!

**Mickael Blanc CEO**



# Lets Talk National Disability Insurance Scheme (NDIS)

**A new way of thinking...**The NDIS is a national scheme to provide targeted support and better coordination and access to services for people with disabilities. It's a single national system, which means that regardless of what kind of disability you have and where you live, you will be able to equally access existing services.

The choice and control the NDIS offers means you are now **empowered**. You and your family will have total control over choosing the services that work best for you and get the support you need.

The rollout of the NDIS started in Ipswich during January 2017. Some clients have been contacted via mail, others received a **telephone** call from NDIA to confirm details, and last week two **families** were contacted via telephone to have a **plan** developed.

As you are aware, FOCAL has been providing extensive **support** during the past eighteen months to existing clients and the **community** through the facilitation of workshops, meetings, telephone calls, and the creation of an individual **'My Plan'**. To discuss your **opportunities** and concerns with our **dedicated** staff please contact us. FOCAL will work with you to develop a plan which will **empower** you and/or your loved ones to achieve individual goals and receive the support you are entitled to.

Prepare now by completing your **My Plan** with a specialised FOCAL member. Think about the following:

- Your needs and goals: **Think Big**
- What your life looks like
- Write a daily and weekly schedule/diary
- Living arrangements
- Current relationships
- Current support
- What you would like your life to look like in the future

Family members play a **key role** in the lives of many people with a disability, doing whatever they need to do to ensure their son, daughter, sibling or family member have the best opportunities in life. Remember to write down each role that they play. These are called **informal supports** in **NDIS** language.



Think about how you would like the funds to be **managed**. You have choice and control over how you use funded supports in your plan. That includes **choice** of how the supports are given and which service providers you use.



# NDIS Registration Process

## Prepare Now

Are you registered?

**YES**

Ensure your **My Plan** is complete and up to date  
 Contact our specialised FOCAL staff to discuss your readiness for NDIS planning.

Your **My Plan** will assist you when completing the **NDIS Planning Workbook**.

**My Plan**



**ALL ABOUT ME**

What people like and admire about me...

Interests I have at home and in community...

What is important to me...

How I need to be supported....

Lifestyle Future Goals for me... (e.g. about daily life, where I live, relationships, my health and wellbeing, learning, work, social and community activities and choice and control over my life)

**no**

1. Contact Disability Services and register with them as soon as possible
2. Contact NDIA and register with them as soon as possible
3. Contact your Local Area Coordinator (Carers Australia Qld)

Disability Services  
**13 74 68**

NDIA  
**1800 800 110**

Carers Australia Qld  
**1800 242 636**

When you are contacted about NDIS, ask:

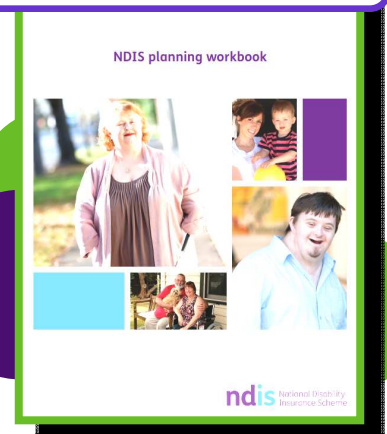
Are you from the NDIA?

Is this conversation to develop my first plan?

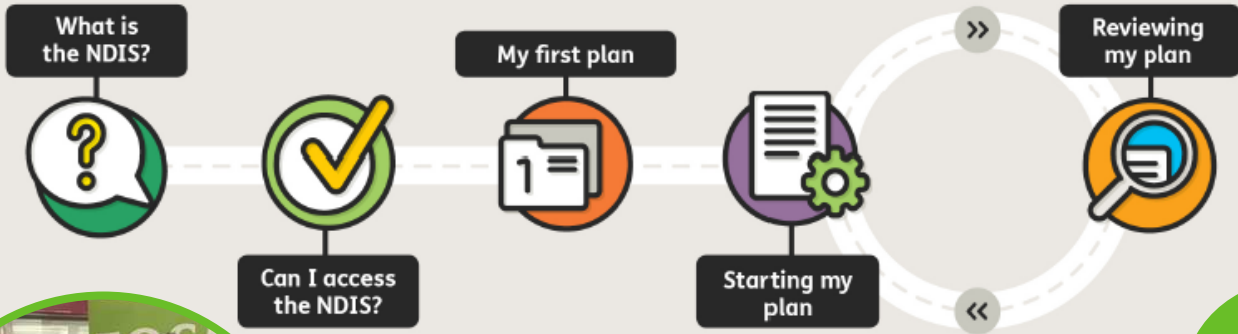
Be prepared for **NDIA** to contact you to develop your **My Plan**. Please note that you will be contacted via telephone. You can request a face to face meeting to conduct your planning.

Complete **NDIS Plan** with NDIA.

Contact **FOCAL** to record your Plan and to discuss activating your Plan.



# My NDIS pathway



**list everything you do daily**

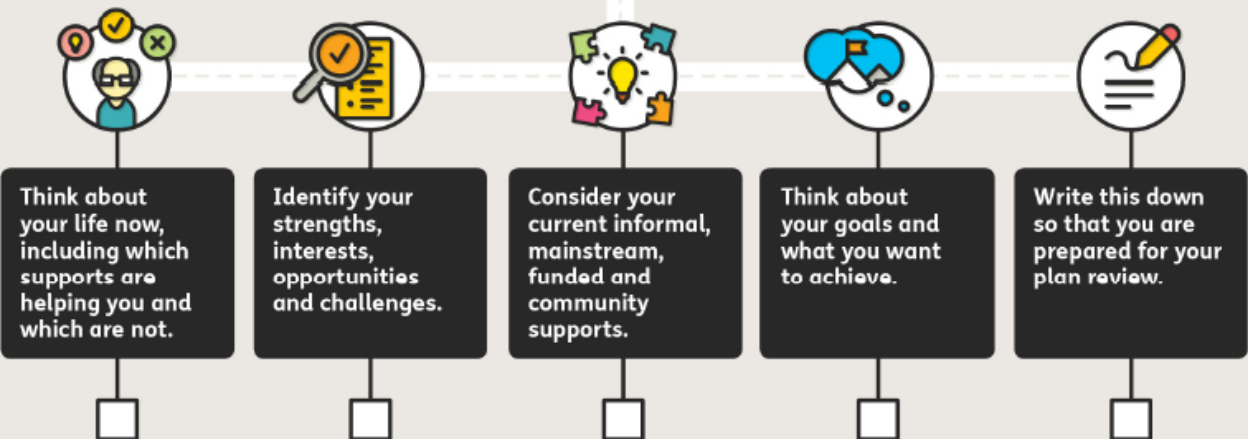
**Dream big**

**Understand NDIS**

# Reviewing my plan



This checklist helps you get ready for making your next NDIS plan.



What's next...

# Contact FOCAL



Registered with NDIA



Spoke with FOCAL staff about NDIS and your completed My Plan



Received phone call and/or letter from NDIS and booked in NDIS Planning



Completed NDIS Plan

What  
Do I Do  
Now



Call us to record your Plan and arrange further support

**Contact details:**

**Phone:** (07) 3812 2014

**Email:** [admin@focal.org.au](mailto:admin@focal.org.au)

**Visit:** [www.focal.org.au](http://www.focal.org.au)

**Address:**

7 Canning Street, North Ipswich Q 4305

Be prepared and ensure you are ready as it seems that NDIA is aiming at completing individual planning by the end of June 2017. The choice and control NDIS offers means you are now **empowered**. You and your family will have total control over choosing the services that work best for you and get the support you need. We are here to support you and your loved ones every step of the way.



FOCAL provides innovative services to support the community in particular children, adults, young adults and people with a disability over the age of 65 years living in South East Queensland with a disability.



Facebook page search

'FOCAL Community Living Inc'



# Activate Plan...

Do you have an approved NDIS plan?

YES

Choose how you would like your Plan to be managed.

Your options are:

1. Self managed (contact your lawyer and/or accountant to discuss)
2. Managed by NDIA
3. Managed by a third party plan manager of **your choice**. Please note that if you choose this option money for this is paid **on top** of your approved NDIS plan. FOCAL is a registered plan manager

Contact FOCAL to record your Plan

Activate your Plan. Activation can occur after 1st July 2017

Please contact FOCAL at anytime to support you with implementing your Plan

NO

Register with NDIA

Speak with FOCAL staff about NDIS and complete My Plan

Receive phone call and/or letter from NDIA and booked in NDIS Planning

Complete NDIS Plan

Contact FOCAL to record your Plan and arrange further support

Choice is YOURS!

Be Empowered

myplace

Activation process includes registering for myGov and link to NDIS Participant Portal myplace

Contact FOCAL